

Have a Seat,

Take a Break,

Support

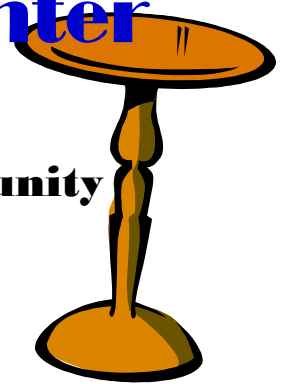
Chairs for Charity

Art for Hospice

Friday, October 1, 2010

during Ashland's First Friday
at the Pendleton Arts Center

Show off your artistic talents. Paint or decorate
a chair, stool, small table, mirror, etc. for Community
Hospice's Chairs for Charity fundraising event.



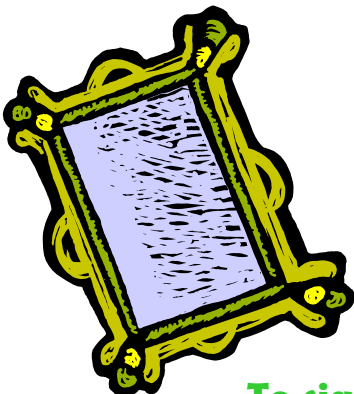
IDEAS

Porch Chair
Rocking Chair
Child's Chair
End Table

Lawn Chair
Desk Chair
Coordinating Cushion
Occasional Table
School Theme

Outdoor Chair
Odd Chair
Kitchen Stool
Wall Mirror
Holiday Theme

Camp Chair
Antique Chair
Bar Stool
Ice Cream Parlor Set
Patriotic



Community
Hospice



To sign up, contact Beth Taylor at Community Hospice

606-329-1890 800-926-6184

Registration form at: www.chospice.org

Community Hospice

Art for Hospice

Name _____

Address _____

City, State, Zip _____

Phone _____ Email _____

What type of piece are you entering: Chair Stool Table Mirror
 Other _____

What is the title of your piece: _____

Give a brief description of the piece: _____

Your biography and what inspired you to do this piece: _____

Signature _____ Date _____

Application deadline is August 13, 2010. Pieces (chairs, stools, tables, mirrors) **must be completed by September 7, 2010** and delivered to Community Hospice, 1538 Central Avenue, Ashland.

Community Hospice

Attn: Beth Taylor

1538 Central Avenue • Ashland, KY 41101

606-329-1890 • 800-926-6184 • 606-329-0018 Fax

btaylor@chospice.org